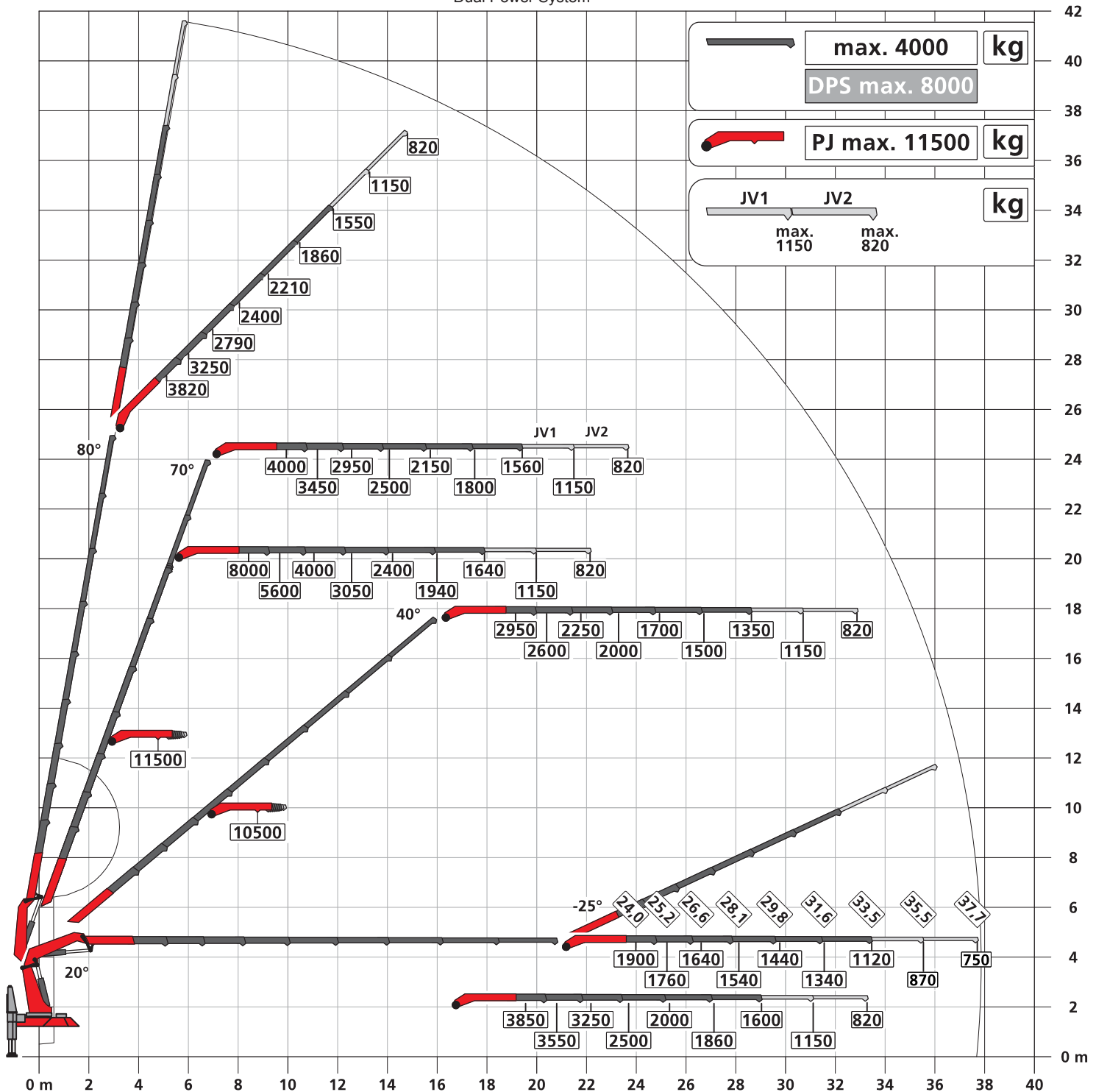


Subject to change, production tolerances have to be taken into account.

Symbolic crane figure

# DPS-C

Dual Power System



:Dead weight      JV1    JV2  
                         45 kg   45 kg

When using mechanical boom extensions, the loads shown on the charts need to be reduced by the weight of these extensions. The load capacities as per chart are not reached when using hose equipment on the Fly-Jib.

For Rope winch load capacity refer to page  
Page 020.21000 3.5t

